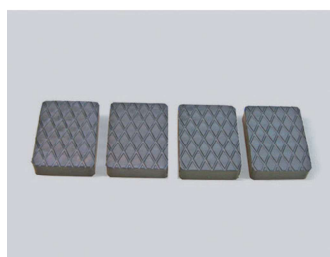


ALADDIN UP 35

SICURO SAFE
ROBUSTO STRONG
AFFIDABILE RELIABLE



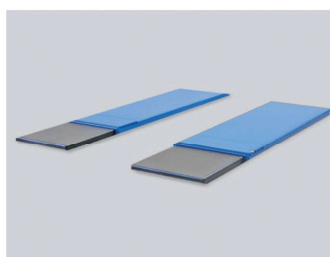
ACCESSORI ALADDIN UP 35



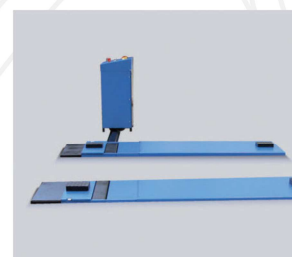
1



2



3



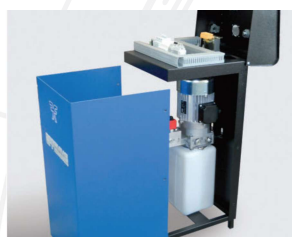
4



5



6



7

1 - TAMPONI H= 40 mm COD. PAD. 4
1 - RUBBER PAD H= 40 mm COD. PAD. 4

2 - TAMPONI H= 80 mm COD. PAD. 8
2 - RUBBER PAD H= 80 mm COD. PAD. 8

3 - ESEMPIO DI INCASSO
3 - EXAMPLE OF INGROUND INSTALLATION

4 - ESTENSIONE SEMI APERTA A TERRA
4 - HALF-OPEN EXTENSION ON THE FLOOR

5 - COPRISPAZIO per apertura estensione a terra (opzionale).
5 - SPACE COVER inground installation, to open extensions on the floor

6 - TELAIO PER INCASSO (opzionale) per una migliore rifinitura e per sostituire la cassa forma per la colata di cemento.

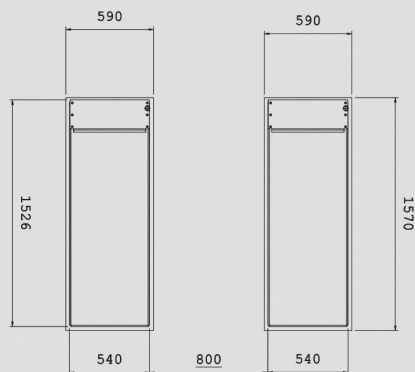
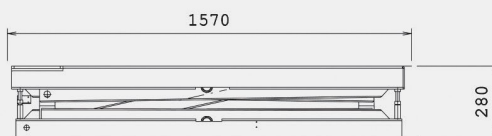
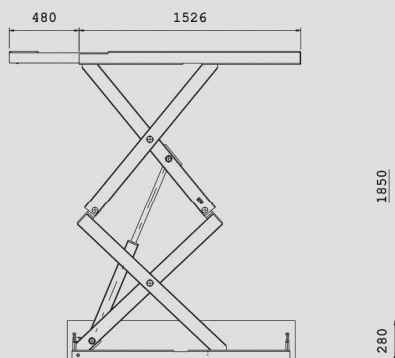
6 - INGROUND INSTALLATION FRAME (optional), for a better finishing touch and for replacing the formwork for the casting of cement.

7 - CONTROL BOX rende estremamente semplici le fasi d'installazione

7 - CONTROL BOX to make an easy installation

CARATTERISTICHE / CHARACTERISTICS

- . Comandi a bassa tensione (24V)
. *Low voltage commands (24V)*
- . Doppio sincronismo idraulico volumetrico.
. *Double hydraulic-volumetric synchronism of platforms.*
- . Circuito idraulico dotato di sicurezza contro la rottura accidentale o taglio dei tubi.
. *Hydraulic system equipped with safety mechanism in case of failure due to broken tubes.*
- . Dispositivo per la discesa manuale in caso di assenza di corrente.
. *Device for manual descent in case of power failure.*
- . Segnale acustico in fase di discesa.
. *Acoustic signal on descent.*
- . Controllo livellamento pedane.
. *Control of platforms levelling.*



DATI TECNICI ALADDIN UP 35 / TECHNICAL DETAILS ALADDIN UP 35

· Funzionamento / Operation	Elettro idraulico / Electro-hydraulic
· Portata / Capacity	3.500 Kg
· Peso / Weight	650 Kg
· Tempo di salita / Lifting time	45 sec.
· Tempo di discesa / Lowering time	45 sec.
· Motore / Motor	220/380V 2.2 Kw 50 Hz.
· Temperatura di funzionamento / Working temp	0° / +40°
· Pressione di esercizio / Working max pressure	280 bar
· Corrent / Current	5,3 A